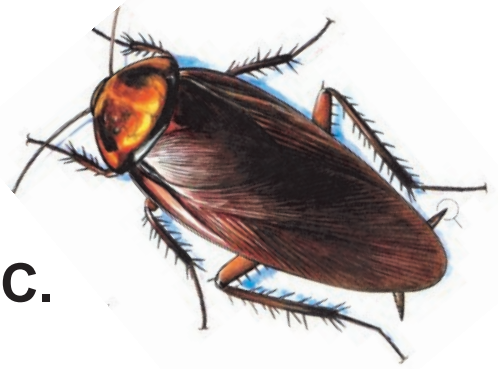




# Reclaim Cockroach Kill<sup>er</sup>



Monteith Mineralized Solutions, INC.

## PREPARATION & TIPS

- RECLAIM IS A NEW AND TOTALLY ENVIRONMENTALLY FRIENDLY COCKROACH KILLER. IT IS A CLEAR, NON-STAINING FLUID THAT DOES NOT HARM OR PIT SURFACES. IS APPLIED UNDILUTED BY SPRAYER SET ON A "FINE MIST" SETTING.
- RECLAIM CONTAINS ONLY INGREDIENTS THAT ARE ON THE E.P.A. EXEMPTION LISTS FOR BOTH ACTIVE INGREDIENTS (CEDAR OIL) AND INERTS. THESE ESSENTIALLY FOOD GRADE INGREDIENTS ARE CLASSED AS "LOW RISK" BIOPESTICIDES BY THE E.P.A. AND, AS THEY ARE EXEMPT FROM REGISTRATION, THERE IS NO FEDERAL REGISTRATION NUMBER. IT IS ALSO ON THE FDA'S "G.R.A.S. LIST" OF SAFE PRODUCTS.
- STORE USED AND UNUSED RECLAIM WITH CAP FIRMLY AFFIXED. STORE AT TEMPERATURES BETWEEN 30 AND 80 DEGREES. TO USE FROM GALLON SIZE, POUR UNDILUTED INTO SPRAYER RESERVOIR AND CHECK SPRAY SETTING
- VERY LITTLE RECLAIM TREATS A SIZEABLE AREA DEPENDING ON DEGREE OF INFESTATION AND PROPER APPLICATION. YOU SHOULD BE ABLE TO TREAT A KITCHEN IN MINUTES
- VENT 15 MINUTES AFTER TREATMENT. ALL MAY RE-OCCUPY 15 MINUTES AFTER THE ROOM IS VENTED. CLEAN SURFACES WHERE FOOD HANDLING AND PREPARATION ARE TO BE DONE. ONLY A SLIGHT AND PLEASING CEDAR AROMA WILL REMAIN

## APPLICATION INSTRUCTIONS

REMOVE PEOPLE, PETS, BIRDS AND FLOWERING PLANTS FROM THE AREAS TO BE TREATED.

STORE FOOD IN SEALED CONTAINERS OR REFRIDGERATOR. STORE FOOD PREPARATION TOOLS IN PLASTIC.

CLEAR COUNTERTOPS AND DRAWERS AND WRAP ITEMS IN PLASTIC.

REMOVE ANY OLD SHELF PAPER.

CLEAR BATHROOM CUPBOARDS AND VANITY AND PLACE IN BATHTUB.

CLEAR SHELVES AND FLOOR OF CLOSETS. CLOSE WINDOWS AND DOORS.

FURTHER PREPARE THE AREA BY MOVING FURNITURE AND EQUIPMENT TO ACCESS ALL LIKELY AREAS AND NORMAL HIDING PLACES.

BEST TO WEAR A DUST MASK AND GLOVES WHILE TREATING THE ROOM(S) AS THE SPRAY IS FAIRLY CONCENTRATED.

MIST CLOSELY AND CAREFULLY IN FOOD PREPARATION AND STORAGE AREAS, WHERE COCKROACHES FEED.

THEY PREFER WARM, DARK LOCATIONS (EX. ALONG AND UNDERNEATH CABINERY; ALONG WALLS; IN ALL CREVICES SUCH AS MOULDINGS AND BASEBOARDS; UNDER APPLIANCES AND EQUIPMENT AND INSIDE THEIR MECHANICAL AREAS; BEHIND AND INSIDE PANEL BOXES; CLOSET AND CUPBOARD FLOORS AND SHELVES; UNDER PALLETS OR BOXES ON THE FLOOR; UNDER CUTTING BOARDS OR BUTCHER BLOCKS), AND ANY OTHER POSSIBLE HIDING PLACE IN KITCHENS AND BATHROOMS PRIMARILY.

OTHER ROOMS ARE SECONDARY.

ROACHES TRAVEL ALONG PIPES AND DUCTWORK SO THESE AREAS SHOULD BE SPRAYED ALSO NEAR THE KITCHEN AND WASHROOM.

IN THE INFESTED AREA, WHEN TARGET LOCATIONS HAVE BEEN MISTED, TAKE A COUPLE OF MINUTES AND MIST THE ROOM GENERALLY. BE THOROUGH.

PLEASE NOTE: ROACHES ARE KILLED BY BREATHING IN THE VAPOROUS MIST, NOT BY BEING "SHOWERED" WITH SPRAY. SPRAYING A STREAM OF FLUID ON SUSPECTED OR KNOWN ROACH LOCATIONS WILL USE EXCESSIVE AMOUNTS AND WILL NOT RESULT IN THE MOST EFFICIENT KILL.



**Reclaim  
Cockroach  
Kill<sup>er</sup>**